

Kinetrol Model 03, 05 & 07 Modular Manual Fail-Safe Spring Unit



 ATEX Category 2

Specification

Angle of Travel (adjustable)

90° (alternative angles available)

Materials of Construction

Casing: Extruded and pressure die cast aluminium alloy

Output Shaft: Stainless steel

Clock Type Spring: Carbon spring steel

Lever: Stainless steel

Finish

Epoxy thermoset powder

Operating Temperature

-40°C to +80°C (-40°F to +176°F)

- Manual unit, cannot be left in the wrong position
- Reliable torque delivery for valve reseal
- Fully reversible direction of spring from clockwise to counter clockwise or counter clockwise to clockwise
- No air or special tools required and direction reverse can be completed in minutes
- Can be converted from male to female drive and vice versa
- Spring housing sealed to IP65 to protect from internal corrosion
- Locking feature as standard (padlock not included)
- Stainless steel shaft and lever as standard

Torques & Weights

	Maximum Torque		Torque Reduction Through Stroke		Weights	
	Nm	lbf.ins	Nm	lbf.ins	Kg	lbs
Model 03	14.0	124	3.0	26.6	1.4	3.75
Model 05	24.0	212	3.5	31.0	1.7	3.09
Model 07	50.8	450	5.8	51.0	3.8	8.37

Kinetrol Model 03, 05 & 07 Modular Manual Fail-Safe Spring Unit

Product Codes

034-0A0-1006	Metric Modular Manual Fail-safe Spring Unit Counter Clockwise
034-0C0-1006	Metric Modular Manual Fail-safe Spring Unit Clockwise
054-0A0-1006	Metric Modular Manual Fail-safe Spring Unit Counter Clockwise
054-0C0-1006	Metric Modular Manual Fail-safe Spring Unit Clockwise
074-0A0-1006	Metric Modular Manual Fail-safe Spring Unit Counter Clockwise
074-0C0-1006	Metric Modular Manual Fail-safe Spring Unit Clockwise

For ANSI units replace 4 with 7 e.g. 057-0A0-1006

Female Drive Options

033F0A0-1006 Metric Modular Female Drive Manual Fail-safe Spring Unit Counter Clockwise F03/F05/F07 with 11mm star drive
 033F0C0-1006 Metric Modular Female Drive Manual Fail-safe Spring Unit Clockwise F03/F05/F07 with 11mm star drive
 033F0B0-1006 Metric Modular Female Drive Manual Fail-safe Spring Unit Counter Clockwise F04 with 11mm star drive
 033F0D0-1006 Metric Modular Female Drive Manual Fail-safe Spring Unit Clockwise F04 with 11mm star drive

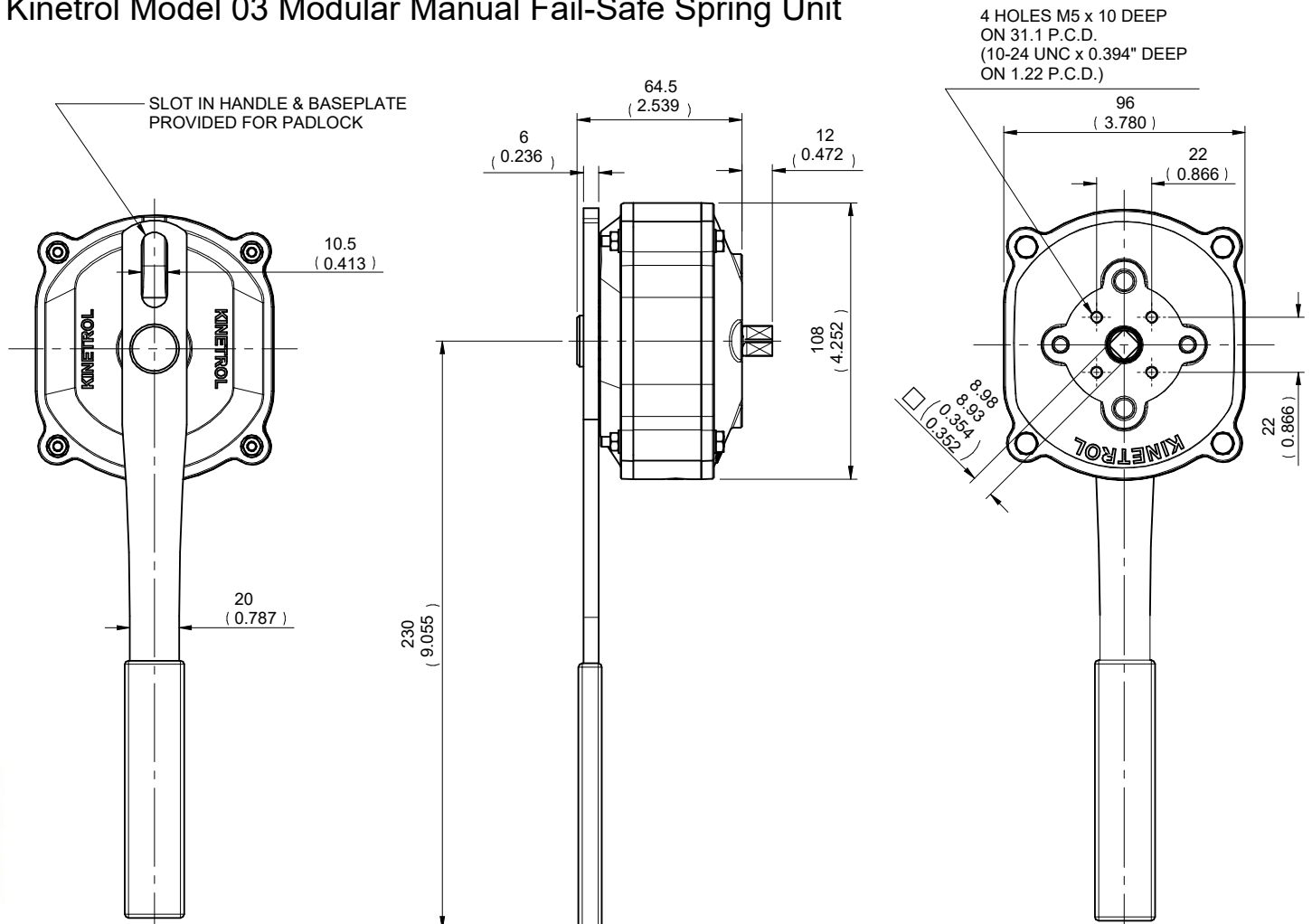
053F0A0-1006 Metric Modular Female Drive Manual Fail-safe Spring Unit Counter Clockwise F03/F05/F07 with 14mm star drive
 053F0C0-1006 Metric Modular Female Drive Manual Fail-safe Spring Unit Clockwise F03/F05/F07 with 14mm star drive
 053F0B0-1006 Metric Modular Female Drive Manual Fail-safe Spring Unit Counter Clockwise F04 with 14mm star drive
 053F0D0-1006 Metric Modular Female Drive Manual Fail-safe Spring Unit Clockwise F04 with 14mm star drive

073F0A0-1006 Metric Modular Female Drive Manual Fail-safe Spring Unit Counter Clockwise with F05/F07 with 17mm star drive
 073F0C0-1006 Metric Modular Female Drive Manual Fail-safe Spring Unit Clockwise with F05/F07 with 17mm star drive

For ANSI units replace 4 with 7 e.g. 057-0A0-1006

Dimensions

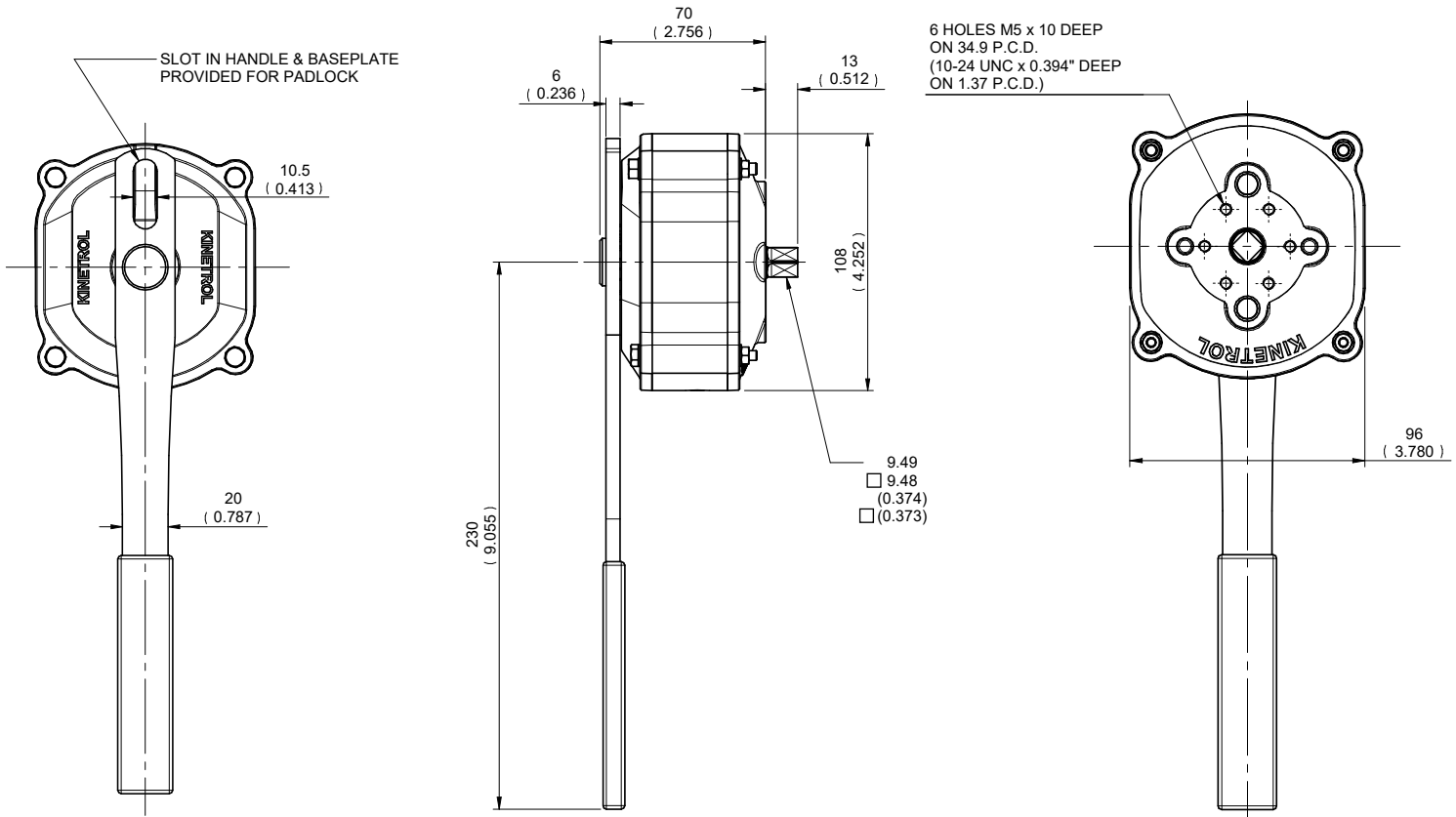
Kinetrol Model 03 Modular Manual Fail-Safe Spring Unit



Kinetrol Model 03, 05 & 07 Modular Manual Fail-Safe Spring Unit

Dimensions

Kinetrol Model 05 Modular Manual Fail-Safe Spring Unit



Kinetrol Model 07 Modular Manual Fail-Safe Spring Unit

