



1. INTRODUCTION

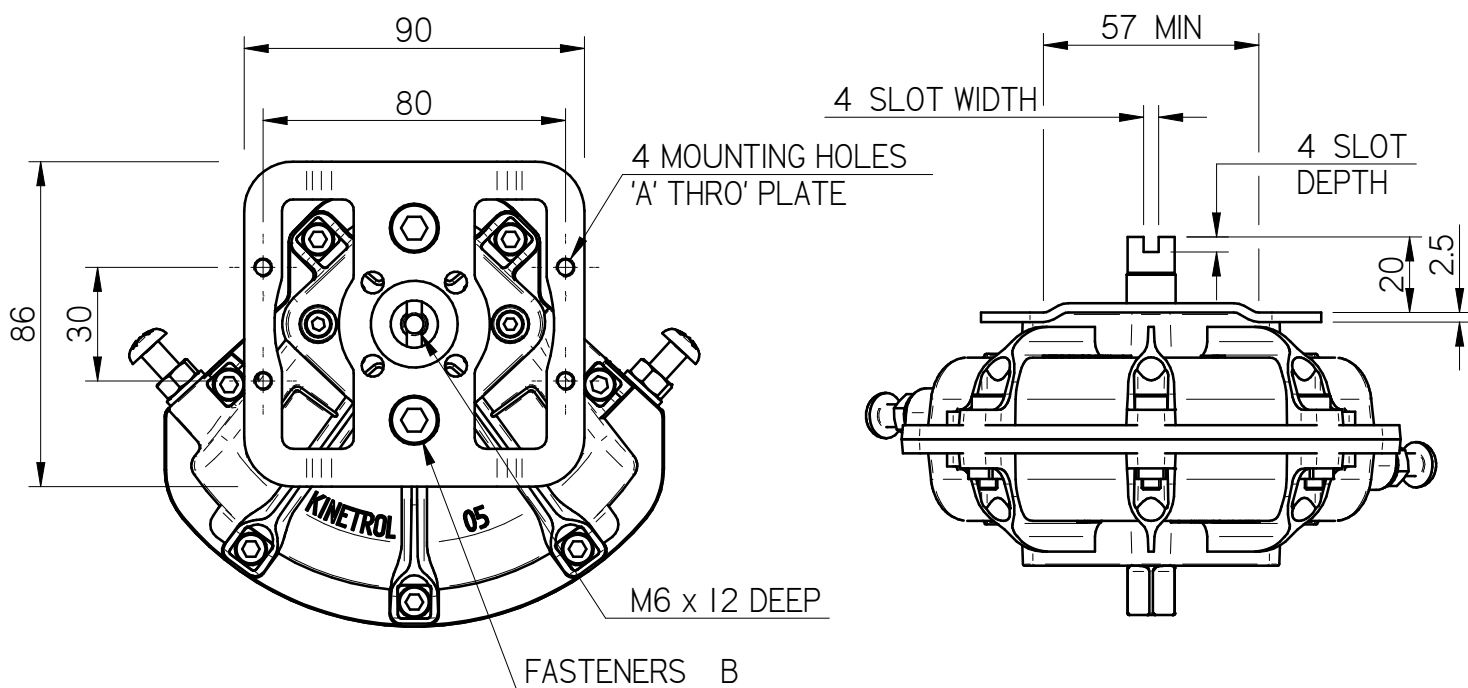
03, 05, 07 & 08 Actuators ordered with a 'V' suffix (e.g. 054-100V) have a VDI/VDE 3845 slot machined into the actuator vane and are supplied with adaptor plates to make the actuator compatible with the accessory mounting interface defined in VDI/VDE 3845.

In addition, 03 & 05 actuators ordered with a 'V' suffix include vanes which have an extended output shaft on the accessory end to meet the VDI/VDE 3845 specification.

2. MATERIALS OF CONSTRUCTION

Part description	Material
Adaptor plate	304 stainless steel
Fasteners	A4-70 stainless steel

3. PRINCIPAL DIMENSIONS



Adaptor kit	Actuator size	Bracket mounting thread A	Fastener size B	No. Off	Recommended Tightening Torque Nm (lbf.ins)
SP641 ASP641	034-100V/033-100V 037-100V	M5 10-24 UNC	M5 x 10mm 10-24 UNC x 3/8"	4	4 (30)
SP641 ASP641	054-100V/053-100V 057-100V	M5 10-24 UNC	M8 x 10mm 5/16-18 UNC x 3/8"	2	10 (90)
SP641 ASP641	074-100V/073-100V 077-100V	M5 10-24 UNC	M8 x 10mm 5/16-18 UNC x 3/8"	2	10 (90)
SP641 ASP641	084-100V/083-100V 087-100V	M5 10-24 UNC	M8 x 10mm 5/16-18 UNC x 3/8"	2	10 (90)