

Kinetrol Model 12 Double Acting Actuator

Specification

Angle of Travel (adjustable)

80° - 102°

(restricted travel versions available)

Displaced Volume

1410 cm³ / 86 in³

Materials of Construction

Casing: Pressure die cast aluminium alloy

Vane & Output Shaft: SG iron, zinc plated

Shaft bushes: PTFE coated bronze (lead free)

Seals: Moulded polyurethane

Seal expanders: Stainless spring steel

Finish

Epoxy stove enamel

Weight

6.7 kg / 14.8 lb (excluding coupling)

Operating Temperature

-40°C to +80°C (-40°F to +176°F)



ATEX Category 2

Double Acting Torques

Metric Units - Nm

Actuator Model	Pressure (bar)											
	1.5	2.0	2.5	3.0	3.5	4.0	4.5	5.0	5.5	6.0	6.5	7.0
12-100	103	147	190	232	275	319	360	403	446	490	532	575

English Units - lbf ins

Actuator Model	Pressure (psi)									
	20	30	40	50	60	70	80	90	100	
12-100	830	1350	1870	2400	2900	3440	3970	4480	5000	

Options

- Fail safe spring return units
- clockwise or counter clockwise
- Limit switch boxes for open/closed indication
- various switches including hazardous area
- Integral solenoid valve
- AP pneumatic positioner - full range of options
- EL electropneumatic positioner - full range of options
- P3 on/off positioner - full range of options including hazardous area
- Clear Cone monitor
- 180° and 120° model
- Female drive and mounting details to DIN 3337 and ISO 5211
- Spring to centre
- Geared manual override
- G3 Damper Drive
- Accessory mount plate for positioners, switch boxes and clear cone monitor. See TD149.
- High temperature / Low temperature options
- VDI/VDE 3845 Namur accessory mounting option available - contact Kinetrol
- Available in Blueline paint finish

Kinetrol Model 12 Double Acting Actuator

Product Code

Air Ports

Mount Holes

124-100

G $\frac{3}{8}$

4 x M12 x 24 deep on 77.8 PCD
4 x M5 x 10 deep

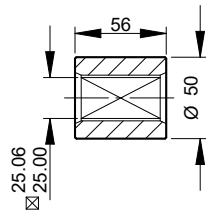
127-100

$\frac{3}{8}$ NPT

4 x $\frac{1}{2}$ -13 UNC x 0.94" deep on 3.06" PCD
4 x 10-24 UNC x $\frac{3}{8}$ " deep

Visual red indicator supplied as standard

Dimensions



Standard Coupling
(supplied with actuator
weight 0.6 kg / 1.3 lbs)

