

Kinetrol Model 09 Double Acting Actuator

Specification

Angle of Travel (adjustable)

80° - 100°

(restricted travel versions available)

Displaced Volume

644 cm³ / 39.3 in³

Materials of Construction

Casing: Pressure die cast aluminium alloy

Vane & Output Shaft: SG iron, zinc plated

Shaft bushes: PTFE coated bronze (lead free)

Seals: Moulded polyurethane

Seal expanders: Stainless spring steel

Finish

Epoxy stove enamel

Weight

3.86 kg / 8.52 lb (excluding coupling)

Operating Temperature

-40°C to +80°C (-40°F to +176°F)



ATEX Category 2

Double Acting Torques

Metric Units - Nm

Actuator Model	Pressure (bar)											
	1.5	2.0	2.5	3.0	3.5	4.0	4.5	5.0	5.5	6.0	6.5	7.0
09-100	46	64	83	102	121	140	159	179	199	220	241	261

English Units - lbf ins

Actuator Model	Pressure (psi)									
	20	30	40	50	60	70	80	90	100	
09-100	360	590	820	1050	1280	1530	1780	2020	2280	

Options

- Fail safe spring return units
 - clockwise or counter clockwise
- Limit switch boxes for open/closed indication
 - various switches including hazardous area
- Integral solenoid valve
- AP pneumatic positioner - full range of options
- EL electropneumatic positioner - full range of options
- P3 on/off positioner - full range of options including hazardous area
- Clear Cone monitor
- 180° and 120° model
- Female drive and mounting details to DIN 3337 and ISO 5211
- ISO adaptor
- G $\frac{1}{2}$ or $\frac{3}{8}$ NPT air port option available - contact Kinetrol
- Spring to centre
- Geared manual override
- High temperature / Low temperature options
- VDI/VDE 3845 Namur accessory mounting option available - contact Kinetrol
- Available in Blueline paint finish

Kinetrol Model 09 Double Acting Actuator

Product Code

● Air Ports

● Mount Holes

094-100

G $\frac{1}{4}$

4 x M10 x 20 deep on 65.0 PCD
2 x M8 x 16 deep on 50.8 PCD

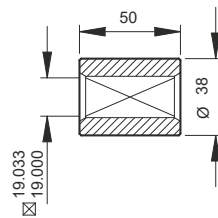
097-100

$\frac{1}{4}$ NPT

4 x $\frac{3}{8}$ -16 UNC x 0.79" deep on 2.56" PCD
2 x $\frac{5}{16}$ -18 UNC x 0.63" deep on 2.00" PCD

Visual red indicator supplied as standard

Dimensions



Standard Coupling
(supplied with actuator
weight 0.3 kg / 0.6 lbs)

