

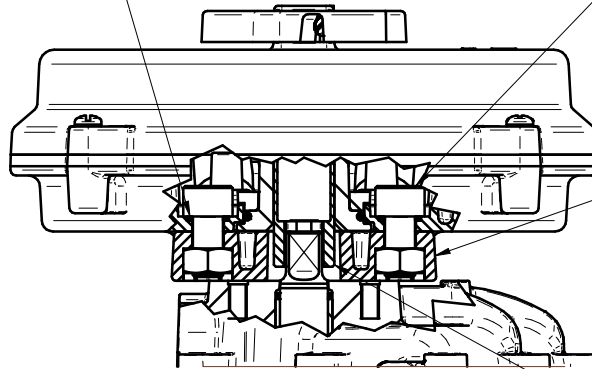


INSTALLATION, OPERATION & MAINTENANCE INSTRUCTIONS: VLS LIMIT SWITCH BOX 03 & 05 MOUNT KIT (SP1620 & SP1621)

1. Materials of Construction:

- Adapter plate body - Conductive polymer or aluminium
- Coupling - Plated mild steel or stainless steel
- Nuts - Stainless steel

Install 'o' rings

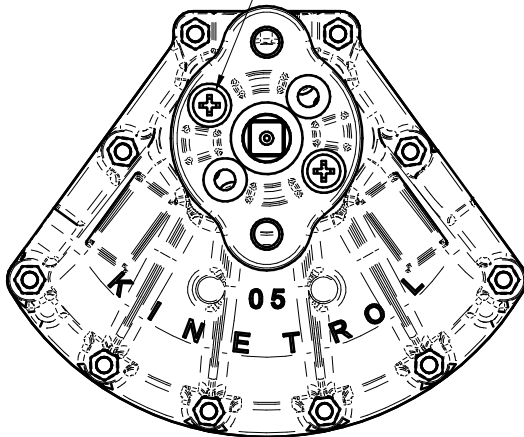


2 Fixing screws supplied with box
Tighten to 15Nm (130 lbf in)
(Chemically lock with
LOCTITE Grade 222
or equivalent)

03 Mount kits:
SP1620 (supplied with M8 nuts)
ASP1620 (supplied with 5/16 UNC nuts)
05 Mount kits:
SP1621 (supplied with M8 nuts)
ASP1621 (supplied with 5/16 UNC nuts)

Ensure coupling is fitted before
assembling box to actuator.

Screw positions shown for 05 mounting
Tighten to 5Nm (45 lbf in)



Screw positions shown for 03 mounting
Tighten to 5Nm (45 lbf in)

